

For immediate release
Contact:
Sarah Michelle Rupert, Girls' Club
954.828.9151
admin@girlsclubcollection.org

Girls' Club presents Interactive, Immersive, Psychedelic Puppet Performance by local artist Jen Clay

Saturday, June 3, 6-9pm
At ArtServe, 1350 Sunrise Blvd

Girls' Club presents Offsite Performance:
Nearing by Jen Clay, an elaborate, multi-media
performance from the Fort Lauderdale-based
artist on **Saturday, June 3, 2017, 6-9pm**, at
ArtServe, 1350 E Sunrise Blvd, in Fort
Lauderdale.

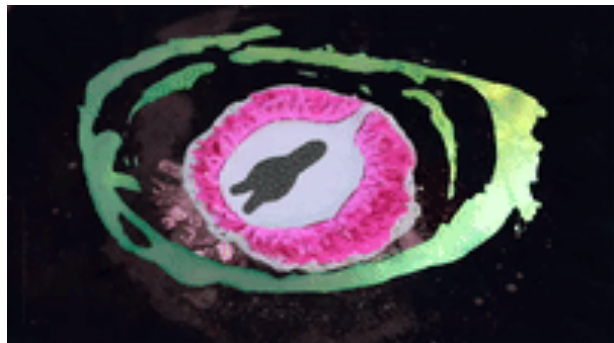
The first performance will begin promptly at
6:30, the second at 7:30pm. The event is free
and open to the public, RSVP/registration
required through Eventbrite: [gc-offsite-by-jen-
clay.eventbrite.com](http://gc-offsite-by-jen-clay.eventbrite.com).

Nearing is a total immersion performance bringing together large scale puppets, performative sculpture, ambiguous creature-like costumes, stop motion animation and an extra-terrestrial soundscape created by Clay's collaborator Elise Anderson.

Audiences of all ages are invited to witness the origins of seemingly friendly non-human beings with unknown intentions and a very visceral obsession with the audience, in this interactive performance. Audiences will be escorted around the outside of the building, through the landing site of Clay's visitors, before entering the main performance.

The project, and much of Clay's work, is inspired by the culture of mysterious creature sightings reported in rural communities, like that of West Virginia's Moth Man and North Carolina's Brown Mountain Lights. These mysterious phenomena have fed a subculture of paranormal believers, conspiracy theorists and generations of suspicious, imaginative people who doubt we are alone in our universe. The creatures introduced in *Nearing* are possessed with an obsession of all things human, not unlike the The Little Mermaid's longing to be human.

Although the event is appropriate for all ages and takes significant influence from children's entertainment tropes like Sesame Street and Teletubbies, adult themes persist. *Nearing* references supernatural and fantastical occurrences, re-creating very human experiences of social anxiety, fear and existential doubt.



Nearing is the third of four Offsite Performances commissioned by Girls' Club. For the series, Girls' Club invited four local female artists to engage otherwise non-traditional locations for performance, while exploring narratives that relate to each's personal artistic practices and inspirations. These multi-disciplinary performances create new opportunities for audience engagement, exploration and collaboration among the local community. Working with local business, non-profits and neighborhood collectives, Girls' Club is forging new relationships between our local businesses, community organizations and a diverse cross section of South Florida residents.

Funding for this project is provided in part by the Broward County Board of County Commissioners as recommended by the Broward Cultural Council, Funding Arts Broward and private donors.

About Jen Clay

Jen Clay is a multi-media artist living and working in Fort Lauderdale, FL. Using a variety of media including video, installation, and performance, Jen Clay constructs narratives that investigate fear and anxiety through recreations of common horror entertainment tropes. Her work is inspired by the playful aesthetic of educational children's TV shows which can be seen in my use of stop motion animation, overly embellished costumes and puppets that speak directly to the audience. Jen Clay received Best Emerging Artist 2016 award by Broward New Times, Knight Arts Challenge Award for Interactive Initiatives, a non-profit founded by her and her husband Samuel Lopez de Victoria and was recently awarded the Cultural Investment Award by Broward Cultural Division. www.jenlynnclay.com

About Girls' Club

Girls' Club is a 501(c)3 private foundation and alternative space established in 2006 by Francie Bishop Good and David Horvitz. Girls' Club produces exhibitions, educational programming, publications and events that change lives, nurture local artists, and inspire cultural growth in South Florida. Girls' Club is the only private collection open to the public that focuses on contemporary art by women in the world. mission The mission of Girls' Club is to educate the public, nurture the careers of female artists, and to serve as a resource for art students and scholars, curators and practicing artists on the contributions of women to the field of contemporary art. A special commitment is made to expose the work of local artists to a broader national and international audience. www.girlsclubcollection.org

About ArtServe

ArtServe is an award-winning arts incubator, one of the original six created in the U.S. with a mission of developing programs that support artists and cultural organizations as a means to creating vibrant, economically viable communities. A 501(c)(3) nonprofit organization, ArtServe offers individuals and businesses a wide range of services, events, affordable facilities and collaborative opportunities that enrich our community, strengthen our economy, foster entrepreneurship and help artists have successful, sustainable careers doing what they do best: turning their passion for the arts into their profession. In short, ArtServe helps artists and cultural organizations turn their art into business. Recognitions include the Salute to Business and Innovation Award for Arts/Culture from the Greater Fort Lauderdale Chamber of Commerce, the 2014, 2015 and 2016 Brazilian International Press Award, the Doyle Award for Non-Profit Excellence and the Nonprofit Academy Award for Best Non-Profit Arts Organization. www.artserve.org